



**THE CROMMELIN GROUP**

Innovation Powered by Experience



EDITION 2 - NOV 2018

**2018/19 PRODUCTS**



**THE CROMMELIN GROUP**  
Innovation Powered by Experience



—  
**INNOVATION  
POWERED  
BY EXPERIENCE**



# CROMMELINS DIFFERENCE

CROMMELINS has always been at the forefront of innovation within the Australian market and this has been powered by the experience of its staff in listening to what the customer needs and introducing products that meet the demands of the industry. All products are rigorously tested

and constantly reassessed to ensure they can outperform. With more than 60 years in Hire and Construction and a founding member of the Hire and Rental Industry Association, Crommelins has been providing high quality portable powered products to Australians since 1958.



## PREFERRED SUPPLIER TO THE HIRE INDUSTRY

Over their long history, CROMMELINS has laid a foundation of reliability and trustworthiness and have built healthy relationships within the Hire and Rental industry.



## AUSTRALIAN OWNED, EST. IN 1958

With a long Australian history you can trust that CROMMELINS will always do their best to look after Aussie needs.



## QUALITY PRODUCTS

Moving forward doesn't mean letting go of the quality products they are known for. You'll always be able to rely on and trust anything from THE CROMMELIN GROUP.



## NEW PRODUCTS, INNOVATIVE TECHNOLOGY

CROMMELINS continues to invest in new generations of products and the latest technology. Only products that stand-up to their rigorous testing will receive the CROMMELINS tick of approval.



## RELIABLE SERVICE

When you've bought a product, CROMMELINS will go that extra mile to assist you when you need parts, service or backup support.



## CUSTOM PRODUCTS

CROMMELINS products can be customised to meet your needs thanks to the flexibility their local manufacturing capacity allows.





# GENERAL TRADE

# CROMMELINS TROLLEYS.



The Crommelins range of compactor, fridge trolley as well as the panel lifter caddy will make the task of moving equipment easier, quicker and safer

## STANDARD FEATURES

- Australian manufactured and assembled
- Powdercoated HD steel frame
- 1 Year manufacturer's warranty

### COMPACTOR TROLLEY

- Handle clip prevents compactor from slipping off trolley
- 2x Heavy duty rubber wheel
- Suits CC70 and CC90 models

### STAIR CLIMBING TROLLEY

- Adjustable strap to hold fridge/object to trolley
- Dual protective strips prevents damage to object
- Tri-shaped wheels allow climbing stairs
- Heavy duty rubber tri-wheels

### PANEL LIFT CADDY

- Lifting hook/bar
- Rubber strap to hold pieces in
- Large never flat wheels
- Keeps all panel lift components in one easy to move and transport caddy



	CWKTR	FTSCS	PLCADDY
<b>CAPACITY MAX. (KG)</b>	150KG	300KG	PANEL LIFT (45KG)
<b>WHEELS TYPE</b>	SOLID RUBBER	TRI-SHAPED SOLID WHEELS	SOLID RUBBER
<b>SUITS</b>	CC70, CC90 COMPACTORS	FRIDGES AND BULKY ITEMS	PANEL LIFT [PLIFT]
<b>WEIGHT (DRY)</b>	15KG	25KG	15KG (60KG WITH PLIFT)
<b>DIMENSIONS (LxWxH)</b>	400 x 500 x 1305MM	460 x 610 x 1520MM	410 x 600 x 1114MM
<b>MANUFACTURER'S WARRANTY</b>	1 YEAR	1 YEAR	1 YEAR

# PANEL LIFT.

The popular dry wall panel lifter enables one person to work alone installing panels to ceilings or vertical walls. This model is designed to fold up and fit in the boot of a car for easy transportation and is perfectly suited for the Hire Industry and Contractors.

## STANDARD FEATURES

- Reaches to 3.4m (11 feet)
- Easy one-person operation
- No tool assembly
- Folding tripod base
- All welded steel construction
- Foldable tripod legs with 5" (125mm) casters so it fits easily through doorways.
- Fast action single stage winch
- Silent camlock brake



	PLIFT
MAX. CAPACITY (KG)	68KG
MAX. HEIGHT (MM)	3350MM
MIN. HEIGHT (MM)	860MM
SHEET SIZE (MM)	1200 X 4880MM
WEIGHT (DRY)	45KG
DIMENSIONS PACKAGE (LxWxH)	1500 x 800 x 400MM
MANUFACTURER'S WARRANTY	1 YEAR

## IDEAL FOR

- Hire and rental
- Walls and ceilings
- Drywall plasterers



## OPTIONAL EXTRAS

- Trolley [PLCADDY]



# MACE PORTABLE SHIFTAS.



The Shifta is a portable conveyor used for moving rubble, aggregate, soils, concrete, and chippings. It is an aluminium constructed machine, available in 3 lengths and can be easily maneuvered by one person.

## IDEAL FOR

- Building and construction
- Landscaping
- Moving rubble, aggregate, soil, concrete, chippings

## STANDARD FEATURES

- Single phase electric motor
- Aluminum extruded body with braked wheels
- Heavy duty detachable hopper
- Use multiple lengths to meet your distance
- Adjust incline up to 50° degree (max.)
- 2 x Emergency stop switches
- Easily movable on site by one person
- In built belt tracking and scraper

## OPTIONAL EXTRAS

- Hopper
- Aggregate sifter [SUPASCREEN]



	<b>SHIFTA3</b>	<b>SHIFTA4</b>	<b>SHIFTA5</b>	<b>SHIFTA3450</b>	<b>SHIFTA4450</b>	<b>SHIFTA5450</b>
<b>CONVEYOR LENGTH (MM)</b>	3200MM	4400MM	5400MM	3200MM	4400MM	5400MM
<b>CONVEYOR WIDTH (MM)</b>	300MM	300MM	300MM	450MM	450MM	450MM
<b>BELT SPEED (M/MIN)</b>	20M / 28M	20M / 28M	20M / 28M	20M / 28M	20M / 28M	20M / 28M
<b>MAX. INCLINE (°)</b>	50°	50°	50°	50°	50°	50°
<b>CAPACITY (TONNES/HR)</b>	50T	50T	50T	90T	90T	90T
<b>MOTOR (W)</b>	550W	550W	550W	750W	750W	750W
<b>DECIBELS @ 7M</b>	65db	65db	65db	75db	75db	75db
<b>WEIGHT (DRY)</b>	103KG	113KG	130G	116KG	160KG	180KG
<b>DIMENSIONS (LxWxH)</b>	3200 x 600 x 820MM	4400 x 600 x 820MM	5400 x 600 x 820MM	3200 x 750 x 820MM	4400 x 750 x 820MM	5400 x 750 x 820MM
<b>MANUFACTURER'S WARRANTY</b>	1 YEAR	1 YEAR	1 YEAR	1 YEAR	1 YEAR	1 YEAR



# MACE BUMPA CONVEYOR.



Simplify the back breaking chore of moving heavy loads to roof height. The Bumpa makes this job quick and easy and is proven to double your performance for half the effort. It is a must for every roofer.

## STANDARD FEATURES

- Foldable design for easy transport and storage
- Single phase electric motor
- Max. incline up to 65° degree (max.)
- Continuous action - no waiting for platforms
- Easily moved and re-positioned (by two persons)
- Forwards and reverse speeds (loading and unloading)
- Reliable simple design
- Virtually maintenance free
- 20kg maximum per carrier

## IDEAL FOR

- Roof tiling contractors

## OPTIONAL EXTRAS

- Pro bucket



	<b>BUMPA6</b>	<b>BUMPA8</b>	<b>BUMPA10</b>
<b>CONVEYOR LENGTH (MM)</b>	6000MM	8000MM	10000MM
<b>MAX. CARRIER CAPACITY (KG)</b>	20KG	20KG	20KG
<b>CAPACITY TOTAL (KG)</b>	80KG	80KG	80KG
<b>MAX. WORKING HEIGHT (M)</b>	5M	7M	9M
<b>MAX. INCLINE (°)</b>	65°	65°	65°
<b>BELT SPEED (M/MIN)</b>	20M	20M	20M
<b>MOTOR (W)</b>	750W	750W	750W
<b>DECIBELS @ 7M</b>	75db	75db	75db
<b>WEIGHT (DRY)</b>	89KG	104KG	119KG
<b>STORAGE DIMENSIONS (LxWxH)</b>	3360 x 620 x 820MM	4300 x 620 x 820MM	5350 x 620 x 820MM
<b>MANUFACTURER'S WARRANTY</b>	1 YEAR	1 YEAR	1 YEAR

# MACE UNILOADA CONVEYOR.

The Uni-loader is a portable belt fed elevator designed for loading and unloading goods and boxes. It will enable you to move your materials from ground to mezzanine in seconds. You can even load from the back of a truck to the mezzanine.

## STANDARD FEATURES

- Continuous pick up / delivery
- Forwards and reverse speeds (loading and unloading)
- From horizontal to up to 30° degrees (max.) incline.
- Automatic stop
- Setup in seconds - easily repositionable
- Lightweight with locking wheels
- Reliable - simple design
- Virtually maintenance free



## IDEAL FOR

- Shifting goods to upper levels
- Production lines
- Sorting
- Hire and rental
- Warehouses
- Goods handling
- Courier companies



	UNILOADA5
CONVEYOR LENGTH (MM)	5000MM
CONVEYOR WIDTH (MM)	270MM
CAPACITY TOTAL (KG)	100KG
MAX. WORKING HEIGHT	4000MM
MAX. INCLINE (°)	60°
BELT SPEED (M/MIN)	20M
MOTOR (W)	750W
DECIBELS @ 7M	75db
WEIGHT (DRY)	89KG
DIMENSIONS (LxWxH)	5000 x 610 x 850MM
MANUFACTURER'S WARRANTY	1 YEAR

	UNILOADA6
CONVEYOR LENGTH (MM)	6000MM
CONVEYOR WIDTH (MM)	270MM
CAPACITY TOTAL (KG)	100KG
MAX. WORKING HEIGHT	5000MM
MAX. INCLINE (°)	60°
BELT SPEED (M/MIN)	20M
MOTOR (W)	750W
DECIBELS @ 7M	75db
WEIGHT (DRY)	104KG
DIMENSIONS (LxWxH)	6000 x 610 x 850MM
MANUFACTURER'S WARRANTY	1 YEAR

# MACE SUPA SCREEN SIFTER.



The compact portable screen is used for sifting soils and aggregates. It will help to cut down on landfill, reducing the number of vehicle movements and generally reduce the environmental impact of construction and building.

## STANDARD FEATURES

- Single phase electric motor
- Dual auxiliary plugs (to couple with Shifta)
- Adjustable angle
- Quick inter-changable screens (6 - 50mm)
- Easy access - can go through 900mm wide openings
- Process large amounts of soil and aggregate
- Reduces number of vehicle movements and landfill

## IDEAL FOR

- Building and construction
- Landscaping
- Sifting rubble, aggregate, soil, concrete, chippings

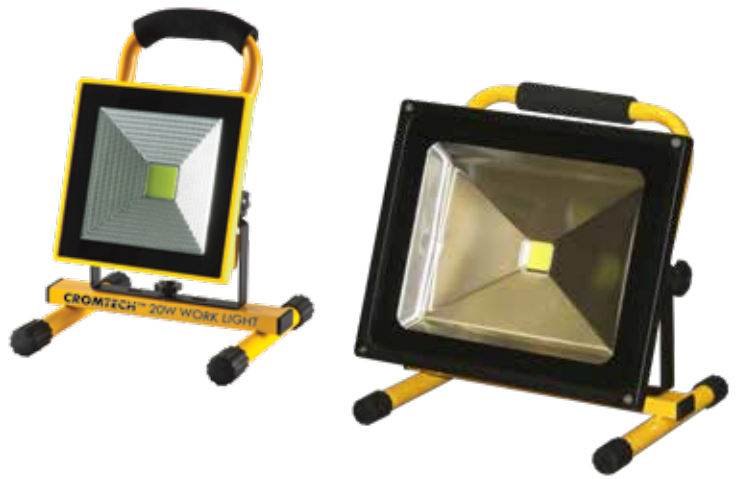
## OPTIONAL EXTRAS

- SCREENS (6, 8, 12, 18, 25, 50mm)

	SUPASCREEN
SCREEN GRADES (MM)	6, 8, 12, 18, 25, 50MM
SCREEN SIZE (MM)	1200 x 720MM
CAPACITY (TONNES/HR)	4T
MOTOR (W)	750KW
DECIBELS @ 1M	90db @ 1 M
WEIGHT (DRY)	165KG
DIMENSIONS (LXWXH)	1750 X 900 X 1200MM
MANUFACTURERS WARRANTY	1 YEAR



# CROMTECH LED WORK LIGHTS.



These rechargeable lights will help lighten your work space when you need it. They come with a carry handle, 240V and 12V charging and is multi positional so that you can light the area you need. It is perfect for applications such as caravanning, camping, emergency lighting and workshops.

## IDEAL FOR

- Building and construction
- Workshops and garages
- Jobsites
- Camping

## STANDARD FEATURES

- LED chip 'Chip on Board'
- 100° beam angle
- Lightweight
- Carry handle
- Up to 4 hours operation
- Rechargeable li-ion battery
- 240V & 12V Charging
- 1 Year manufacturers warranty

## OPTIONAL

- Tripod stand



	<b>CWL20WR</b>	<b>CWL50WR</b>
<b>LED CHIP (COB) OUTPUT (W)</b>	20W	50W
<b>LUMEN (LM)</b>	600LM	1300LM
<b>OPERATION HOURS (HR)</b>	UP TO 4HR	UP TO 4HR
<b>MANUFACTURER'S WARRANTY</b>	1 YEAR	1 YEAR

# CROMMELINS AIR COMPRESSORS.

These Air Compressors are perfect for Industrial, Commercial and Residential use. They are available in Electric, Petrol and Diesel so you will find exactly what you need. Built in heavy duty cast iron, 2 and 3 Cylinder Pump Air Compressors are designed for cool running with stainless steel valves.

## STANDARD FEATURES

- Pressure gauge
- Pneumatic wheels
- 5 Year air tank warranty

## OPTIONAL EXTRAS

- Filter regulator

## IDEAL FOR

- Air powered tools
- Spray painting
- Stapling / Nailing

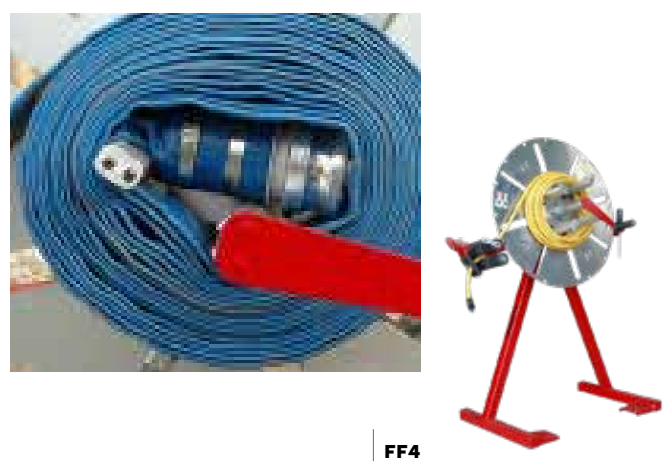


# FAST FREDDY HOSE WINDERS.

Made in Canada and exclusive to Crommelins these are the new solution for rolling up long lengths of layflat hose, air hose, cables, ropes, etc. effortlessly and neatly. Using four centre winding arms, side height arm, material rollers and side guides giving the perfect coil when wound.

## STANDARD FEATURES

- Suits Lay flat hose, extension cords, assorted ropes and cables
- Easy access for securing uniform coils
- Heavy duty maintenance free construction
- Comfortable grip crank handle
- Four adjustable centre winding arms
- Frictionless material guide rollers
- Removes water/air from hose as winding
- Corrosion resistant aluminium reel plate
- Maintenance free construction
- 1 Year manufacturers warranty



	<b>FF4</b>
<b>MAX. SIZE HOSE</b>	4" LAY FLAT (100MM)
<b>HOSE CAPACITY (KG)*</b> *Based on 4" or 6" lay flat hose	72KG
<b>REEL CAPACITY (M)*</b>	30M
<b>REEL SIZE (MM)</b>	760MM
<b>CENTRE PIN LENGTH (MM)</b>	210MM
<b>WEIGHT (DRY)</b>	42KG
<b>DIMENSIONS (LxWxH)</b>	406 x 1345 x 1420MM
<b>MANUFACTURER'S WARRANTY</b>	1 YEAR



## IDEAL FOR

- Rental and Hire
- Hire and rental
- Work shops and Site works
- 4" and 6" Lay flat hoses
- Assorted rope, cables and extension cords

## OPTIONAL

- Leg mount
- Wall mount
- Hitch mount



	<b>FF6</b>
<b>MAX. SIZE HOSE</b>	6" LAY FLAT (150MM)
<b>HOSE CAPACITY (KG)*</b> *Based on 4" or 6" lay flat hose	72KG
<b>REEL CAPACITY (M)*</b>	30M
<b>REEL SIZE (MM)</b>	970MM
<b>CENTRE PIN LENGTH (MM)</b>	280MM
<b>WEIGHT (DRY)</b>	54KG
<b>DIMENSIONS (LxWxH)</b>	480 x 1345 x 1420MM
<b>MANUFACTURER'S WARRANTY</b>	1 YEAR

# EARLEX WALL PAPER STEAMER.

This professional steam wallpaper stripper removes all types of wall paper materials. It makes light work of a difficult job and the frame incorporates a step.

## STANDARD FEATURES

- 2400W heating element
- 90 minutes of steam time
- Anodised aluminium water tank
- 5m anti-kink cool run hose
- 5m power cable
- Exterior water level indicator
- Built in step takes up to 100KG
- Large lightweight steam plate
- 3 year anti-corrosion guarantee on tank

## IDEAL FOR

- Hire and rental
- Building and decorators
- Wallpaper, vinyls, painted surfaces, multi-layered and even Artex®



GENERAL TRADE



**SM5**

<b>WATTAGE (W)</b>	2400W
<b>WATER TANK CAPACITY (L)</b>	7.5L
<b>OPERATION HOURS (HR)</b>	UP TO 4HR
<b>WEIGHT (KG)</b>	9.2KG
<b>DIMENSIONS (LxWxH)</b>	470 x 450 x 410MM
<b>MANUFACTURER'S WARRANTY</b>	1 YEAR

# DRY WALL SANDER.

This heavy duty plasterboard sander is designed with the user in mind. It features comfortable grips, is well balanced and when operated in conjunction with a dust extractor it will result in a virtually dust free sanding environment.

## STANDARD FEATURES

- Advanced soft start motor
- Variable Speed 650-1600RPM
- Unique full movement swivel head – no inefficient screw adjustment
- Includes 4m long vacuum hose
- Universal connection to industrial vacuum
- 225mm diameter disc area
- Comfortable cushioned grip

## IDEAL FOR

- Walls and ceilings
- Hard to reach places



	<b>PS1000</b>
<b>SANDING DISC AREA</b>	225MM
<b>MOTOR WATTAGE (W)</b>	550W
<b>VARIABLE SPEED</b>	650 to 1600rpm
<b>WEIGHT (KG)</b>	8KG
<b>DIMENSIONS PACKAGE (LxWxH)</b>	310 x 310 x 160MM
<b>MANUFACTURER'S WARRANTY</b>	1 YEAR

# DRY WALL VACUUM.

This robust heavy duty extractor is designed specifically for use with plaster board sanders.

## STANDARD FEATURES

- Powerful 1400 watt motor
- Long lasting stainless steel drum
- Large 30 litre capacity
- Includes reusable cloth bag
- Operates as a wet/dry all purpose vacuum
- Includes accessories and floor tools kit
- Automatically switches on and shuts off with Power Sander

## IDEAL FOR

- Plaster board sanding
- General Cleanup



	<b>DE30L</b>
<b>MOTOR WATTAGE (W)</b>	1400W
<b>TANK CAPACITY (L)</b>	30L
<b>WEIGHT (KG)</b>	10KG
<b>DIMENSIONS PACKAGE (LxWxH)</b>	375 x 375 x 615MM
<b>MANUFACTURER'S WARRANTY</b>	1 YEAR



# CROMTECH WET & DRY VACUUM.

This 2400w wet and dry industrial vacuum cleaner has a 90L capacity and a strong suction for use at job sites, workshops, shops, garages and warehouses. It comes with a range of accessories to make the job easier including a two piece stainless steel wand, flexible hose, dry floor tool and a wet floor tool.

## STANDARD FEATURES

- Wet and dry vacuum cleaner
- 2400w power using 2 x 1200w motors
- 90L Poly tank
- Auto float-switch shutoff for wet vacuuming when reaches full capacity
- Impact resistant poly design
- Drainage hose
- 4.4m power cable
- 76 to 78dB decibels
- 1 Year manufacturer's warranty

## IDEAL FOR

- Building and construction
- Workshops and garages
- Job sites

## ACCESSORIES INCLUDE

- Two piece stainless steel wand
- Flexible hose
- Dry floor tool
- Wet floor tool
- Crevice tool
- Brush tool



	CTZD98
WATTAGE (W)	2400W
TANK CAPACITY (L)	90.0L
MOTOR	2x 1200W
WEIGHT (KG)	26KG
DIMENSIONS PACKAGE (LxWxH)	590 x 510 x 995MM
MANUFACTURER'S WARRANTY	1 YEAR





# WARRANTY



### **3 YEAR ROBIN ENGINE WARRANTY**

Robin Industrial Engines and Robin Imported Products (Pumps, Generators) come with a 3 year manufacturer's warranty.



### **2 YEAR MANUFACTURER'S WARRANTY**

CROMMELINS™ brand products powered by a Robin Industrial Engine come with a 2 year manufacturer's warranty.



### **1 YEAR MANUFACTURER'S WARRANTY**

All other products including CROMMELINS™, CROMTECH™, flexible drive products (ie FP2T), high pressure pumps and imported products come with a 1 year manufacturer's warranty.



### **OTHER BRANDS WARRANTY**

Other branded products come with warranties provided by their manufacturer, ie. Golz, American Sanders, AR Blue Clean.

—  
**AWARD WINNING  
SERVICE &  
BACKUP**

# WARRANTY EXPLAINED

Crommelins Machinery warrants their goods against defects in materials and workmanship under normal use and service.

The Crommelins Machinery warranty does not cover fair wear commensurate with the age of the product, any damage caused by accident, abuse, misuse, neglect or failure to observe proper operating instructions or proper machinery maintenance as described in the instruction manual.

It is the owners responsibility to regularly maintain a product in accordance with the owners manual and only use the equipment for its designed purpose.

Our goods come with guarantees that cannot be excluded under the Australian Consumer Law. You are entitled to a replacement or refund for a major failure and for compensation for any other reasonably foreseeable loss or damage. You are also entitled to have goods repaired or replaced if the goods fail to be of acceptable quality and the failure does not amount to a major failure.

## CONSUMER ADVICE

Any claim under these warranties must be made within warranty period from the date of purchase of the product.

To make a claim under the warranty, you must return the product (with proof of purchase) to the closest warranty agent or to the place of purchase.

Where a failure does not amount to a major failure, Crommelins Machinery is entitled to choose between providing you with a repair, replacement or refund. To obtain compensation, you would need to provide documentary evidence of the loss or damage suffered, and documentary evidence that such loss or damage was a reasonably foreseeable consequence of a failure by Crommelins Machinery to comply with a consumer guarantee under the Australian Consumer Law.

CROMMELINS™, CROMTECH™, CROMTECH OUTBACK™, CROMMELINS FINANCE™, DOLPHIN™ is registered trademarks of Crommelins Operations Pty Ltd, trading as The Crommelin Group.

## SERVICE AGENTS

There are over 185 national authorised service/repair agents available, visit [www.crommelins.com.au](http://www.crommelins.com.au) for their details and locations. For engine brands other than Robin please contact the manufacturer for service agents.

## CROMMELINS PRODUCTS

Crommelins takes pride in all products they sell and they live by their company Mission Statement; "To be the supplier of choice to Hire and Construction Industry by providing high quality portable powered products."

## THE CROMMELIN GROUP

ABN 11 008 889 656  
PO Box 352, BENTLEY WA 6982

**PH** (08) 9350 5588

**FAX** (08) 9451 6381

**E** [email@crommelins.com.au](mailto:email@crommelins.com.au)

**CROMMELINS™**  
EST. 1958  
MACHINERY

**CROMMELINS™**  
EST. 1958  
MACHINERY

SALES  
&  
SPARE  
PARTS





CROMMELINS  
AUSTRALIA



